

PHILADELPHIA

International Visitors Guide



English

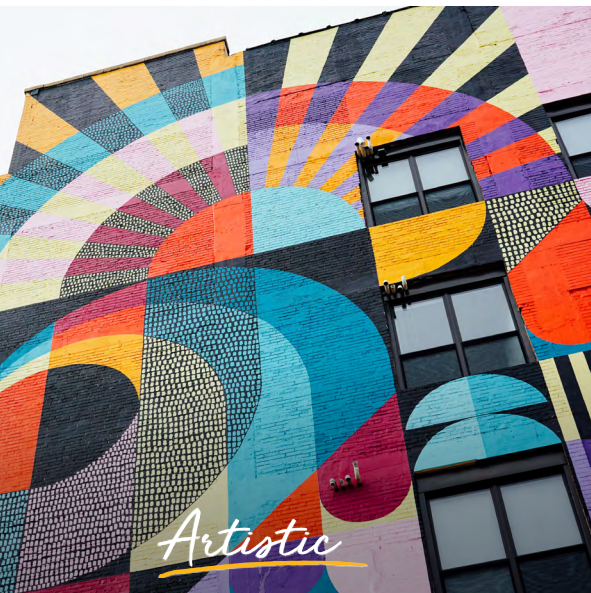
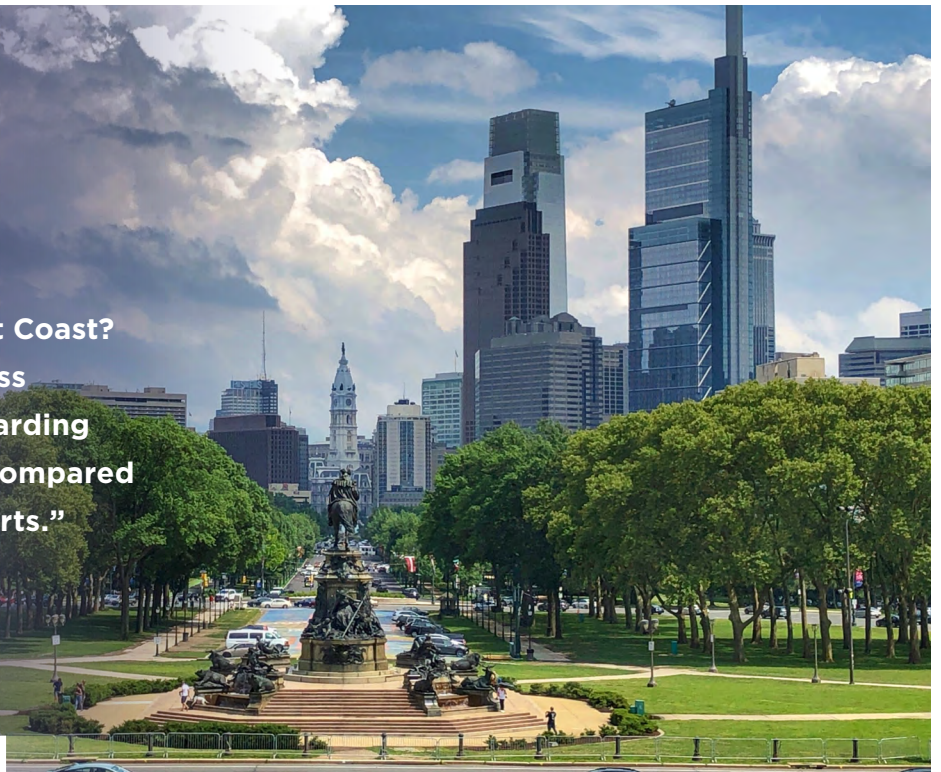
 Philadelphia

Convenient

EAST COAST GATEWAY

“ Best Port of Entry on the East Coast?
Philadelphia’s airport is far less
busy than New York’s and boarding
procedures are far speedier compared
with other international airports.”

— MICHELIN GREEN GUIDE



Artistic



Welcoming



Appetizing

KALAYA | JAMES BEARD AWARD WINNING RESTAURANT



PHILADELPHIA IS...

WELCOMING & INCLUSIVE

Philadelphia is the nation's first World Heritage City as well as the largest U.S. city to be designated a Certified Welcoming city by Welcoming America. Philadelphia's inclusive spirit is ingrained in the city's diversity and history of activism.

WALKABLE

Philadelphia is one of the nation's most walkable cities. Stroll from the Rocky Steps to the Delaware River Waterfront in approximately one hour.

ACCOMMODATING

Philadelphia's hotels provide options catering to every type of visitor, from budget travelers to luxury seekers, and everyone in between.

ADVENTUROUS

Philadelphia offers a wide range of outdoor activities and urban adventures. Containing one of the largest city-owned urban park systems in the world, Philadelphia has over 10,000 acres (4,046 hectares) of park space with more than 150 miles (over 240 kilometers) of recreation trails and two riverfronts woven through the city.

APPETIZING

While the city is known worldwide for its cheesesteaks, Philadelphia is also celebrated for its diverse dining destinations, featuring James Beard award-winning chef-driven restaurants.

ARTISTIC

Art is a vital component to any Philadelphia visit. Walk easily from hotels and pass through the world's largest outdoor art gallery on the way to some of the nation's finest art institutions.

HISTORIC

Philadelphia has 68 National Historic Landmarks throughout the city, which is home to what's called the nation's "most historic square mile." Iconic sites include the Liberty Bell and Independence Hall — where both the United States Declaration of Independence and the Constitution were drafted and signed.

CONVENIENT

Philadelphia's location in the center of the East Coast makes it extremely easy to get to from around the world.

CARPENTERS' HALL

PHILADELPHIA ESSENTIALS



*Easy to get here.
Easy to get around.*

BY PLANE, TRAIN, BUS OR CAR...

GETTING TO PHILADELPHIA:

 Fly direct from over 120 cities worldwide

 1.5 hours from EWR or JFK Airports 

 2 hours from EWR or JFK Airport


FROM PHL AIRPORT TO PHILADELPHIA:

 Airport Train (SEPTA) — 20 minutes

 Taxi, Uber, and Lyft — 15 minutes


GETTING AROUND PHILADELPHIA

 Stroll the USA's "most walkable city"

 Use over 200 stations of Indego bike share to quickly and efficiently get around the city.

 Take taxis or rideshares to farther destinations

 Hop on a SEPTA (public transportation) bus, subway, trolley, or train

 Use the Philly PHLASH® Downtown Loop (available seasonally)



Historic

INDEPENDENCE MALL



VISITOR CENTERS

Get information on the city and region, plus recommendations, maps and more from any of the Philadelphia Visitor Center locations.

INDEPENDENCE VISITOR CENTER

Corner of 6th and Market streets

CITY HALL VISITOR CENTER

Broad and Market Streets, Room 121, City Hall

LOVE PARK VISITOR CENTER

Corner of 16th Street and John F. Kennedy Boulevard

PARKWAY VISITOR CENTER

2501 Benjamin Franklin Parkway

Pick up a Philadelphia International Visitors Guide, available in **English, Spanish, German, Portuguese, Italian, French, Japanese, Chinese, and Korean** at the visitor centers or find them online at discoverPHL.com/international.

THE BY-THE-BOOK

Philadelphia Trip

For the traveler who comes to Philadelphia to see... Philadelphia. We've always been pretty fond of giving the people what they want. History, culture, food—it's all in here.





READING TERMINAL MARKET

DAY 1

INDEPENDENCE VISITOR CENTER

An essential starting point for any Philadelphia visit. Get tickets for local attractions and map out your journey with trip-planning help in 12 languages and an interactive, digital Welcome Wall.

INDEPENDENCE HALL

Take a \$1, ticketed tour of this UNESCO World Heritage Site where America's Founders signed the Declaration of Independence and the U.S. Constitution.

LIBERTY BELL

The symbol of American Independence is free to see (and snap a selfie with), as are the accompanying exhibits inside the **Liberty Bell Center**.

NATIONAL CONSTITUTION CENTER

The only museum in the nation devoted to the U.S. Constitution examines the document via special exhibits and programming just two blocks north from where it was signed.

READING TERMINAL MARKET

With more than 80 merchants — including several Pennsylvania Dutch favorites — this iconic landmark is one of America's oldest and largest public markets and a must-see for visitors looking to sample a taste of Philadelphia.

CITY HALL & DILWORTH PARK

Take a photo of the architectural treasure that is **City Hall**, then head up to the top of the tower for a guided tour and panoramic views of the city.

LOVE PARK

Strike a pose in front of Robert Indiana's iconic sculpture at the gateway to the Benjamin Franklin Parkway and Philadelphia's Museum Mile.

MCGILLIN'S OLDE ALE HOUSE

Cheers to your stay in Philadelphia at the city's oldest continuously operating tavern, open since 1860.



LIBERTY BELL



MCGILLIN'S OLDE ALE HOUSE

DAY 2

HOP-ON HOP-OFF BUS TOURS

Take in historic city sights from a comfy seat on this double-decker bus, with tours available in multiple languages.

PAT'S & GENO'S

Philadelphia's two most famous cheesesteaks are cooked right across the street from one another, easily identified by neon lights and the unmistakable aroma of beef and onions.

PRESIDENT'S HOUSE SITE

Explore the groundwork of our nation's original executive mansion, once home to Presidents George Washington and John Adams, that tells the story of slavery and freedom in the early days of America.

ELFRETH'S ALLEY

Stroll down our nation's oldest continuously inhabited residential street and admire the carefully preserved 18th-century homes that line this historic block in Old City.

MUSEUM OF THE AMERICAN REVOLUTION

Relive the story of the American Revolution and the early days of the United States with interactive exhibits, including George Washington's war tent.

AFRICAN AMERICAN MUSEUM IN PHILADELPHIA

Study exhibits in the nation's first institution in a major city dedicated to the life, art, and works of African Americans.

MURAL ARTS PHILADELPHIA

Take a tour of the nation's largest public art program to learn more about the citywide movement that has resulted in over 4,000 colorful murals in neighborhoods throughout the city.

FRANKLIN FOUNTAIN

Get treated to an old school scoop from a turn-of-the-century ice cream parlor, just a few doors away from the nation's oldest continuously operating candy store.

NIGHTLIFE

Tapas, hidden speakeasies, rooftop bars, and more — there are plenty of experiences to seek out in Philadelphia after the sun goes down.

DAY 3

SCHUYLKILL RIVER TRAIL

Start with a morning walk, jog, run or bike ride along this 20+ mile trail, which weaves through downtown and into Fairmount Park.

PHILADELPHIA MUSEUM OF ART

Scale the 72 "Rocky Steps" and then enter one of the largest art museums in the nation, with new spaces to explore and a collection that spans 2,000 years.

BOATHOUSE ROW

By day or night, Boathouse Row is one of Philadelphia's most iconic views. Find the best vantage point on the western shore of the Schuylkill River.

FAIRMOUNT PARK

Head to one of the many trailheads in the expansive Fairmount Park for a hike, or be immersed in the Fairmount Park Horticulture Center greenhouse.

LUNCH IN FAIRMOUNT

While visiting the attractions in the Fairmount district, find a quaint lunch stop amidst an array of flavor, from breweries to cafes to international eateries.

EASTERN STATE PENITENTIARY

Navigate the crumbling cellblocks of what was once the most expensive prison ever built and learn more about former inhabitants including notorious gangster Al Capone.

RODIN MUSEUM

Revel in one of the largest collections of sculptor Auguste Rodin's works outside of Paris, including a six-foot cast of The Thinker.

MOSHULU

End the evening along the Delaware River with dinner and drinks aboard the **Moshulu**, the world's oldest and largest square-rigged sailing vessel still afloat.

HOTEL | PHILADELPHIA MARRIOTT DOWNTOWN

Right in the heart of the city, the **Philadelphia Marriott Downtown** is steps away from essential sites, and houses a local art gallery and duckpin bowling alley for families to enjoy.



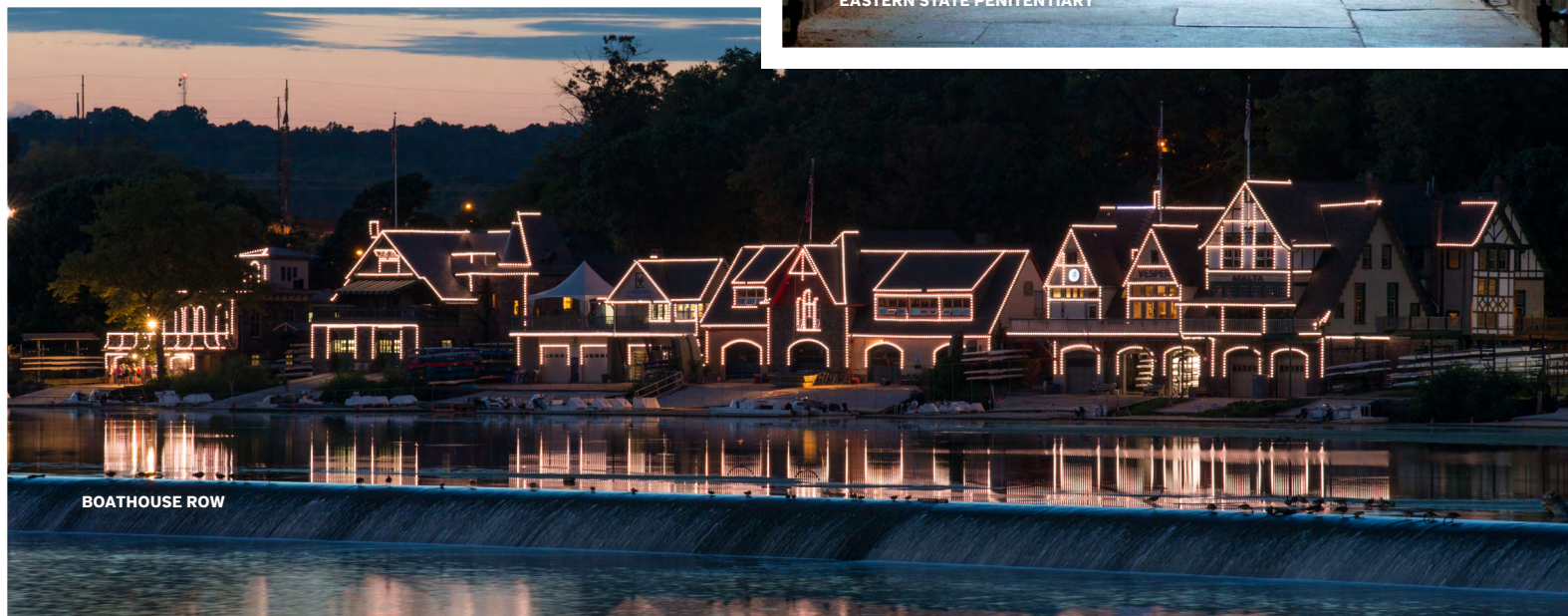
ROCKY STATUE



MUSEUM OF THE AMERICAN REVOLUTION



EASTERN STATE PENITENTIARY



BOATHOUSE ROW

THE 3-DAY FOODIE *Itinerary*

To say the dining scene in Philadelphia is revolutionary is an understatement. Get a true taste of Philadelphia's diverse cuisine over a three day stay.



BOK BAR



DAY 1

CHERISH A CHEESESTEAK

The city's trademark sandwich is a mouthwatering masterpiece of tender pieces of beef combined with melted cheesy goodness on a fresh Italian roll.

Dalessandro's is a classic spot, but don't skip **Campo's** in Old City, **Ishkabibble's** on South Street, or **Cleavers** in Rittenhouse Square.

REFUEL WITH PLANT-BASED PLATES

It's all things plants, all the time, at 100% plant-based local eateries, **HipCityVeg**, **Bar Bombon**, and **Charlie Was a Sinner**. Enjoy a meal at **Vedge**, which has a seasonal menu featuring items made with fresh, locally sourced vegetables. Other plant-based options include the vegan breakfast staples served at **The Tasty**, or the falafel sandwiches, salads and tahini shakes at **Goldie**.

REACH FOR THE STARRS

Home to numerous **STARR Restaurants**, Philadelphia is where James Beard Award winner Stephen Starr started his restaurant empire. **POD** offers a dynamic menu of both classic and creative interpretations of Japanese dishes. Flavor exudes every bite at Mexican staples **El Vez** and **LMNO**.

ROOFTOP BARS

Take in the picturesque Philadelphia skyline while sipping tasteful cocktails and craft beer. **Assembly Rooftop** offers year-round views of the Benjamin Franklin Parkway, and **Bok Bar** serves cool cocktails atop a former elementary school building in South Philadelphia from April through October.

DAY 2

FARMERS MARKETS

To stock up on fruits, vegetables, and other farm-grown goods, shop at the **Headhouse Farmers Market** and **Rittenhouse Farmers Market**. In FDR Park, find Lao, Vietnamese, Indonesian, and more vendors at the seasonal **Southeast Asian Market**.

PREMIER PIZZA

Joe Beddia has made a name for himself, serving the “best pizza in America” at **Pizzeria Beddia**. **Barbuzzo** offers pies with brussels sprout leaves, guanciale, and truffled egg.

POP BY A SEASONAL POP-UP

Enjoy a drink on the Delaware Waterfront at **Spruce Street Harbor Park** or **Cherry Street Pier**. Or visit **Independence Beer Garden**, an expansive space with over 40 regional and domestic craft beers on tap.

FINE DINING/AWARD WINNING DINING

The city’s culinary collective of Iron Chefs and James Beard award winners are proof of Philadelphia’s fine dining prestige. **Friday Saturday Sunday** presents a sophisticated eight-course tasting menu that is seasonally inspired and rooted in classics. **Vetri Cucina** is one of the most respected and influential Italian restaurants in the country.

DAY 3

THE BEST OF BRUNCH

Dog portraits and pictures surround guests at **White Dog Café**, serving farm-to-table favorites. At **Sabrina’s Café**, try soul-satisfying plates of breakfast staples

BE A HOAGIE HERO

Every deli has its own unique spin on the Italian hoagie, typically filled with meat, cheeses, lettuce, tomato, onions, and oil and vinegar. Some of the best hoagie spots can be found at **Cosmi’s Deli**, **Angelo’s Pizzeria**, and **Ricci’s Hoagies**.

CHINATOWN

From bustling dim sum spots to cozy noodle houses, Chinatown is a culinary haven for those seeking flavorful and traditional dishes served at **Sang Kee Peking Duck House**, **Vietnam Restaurant**, and **Yakitori Boy**.

CRAFT BREWERIES

Yards Brewing operates a wind-powered brewery and taproom with a full beer-friendly food menu, and regular behind-the-scenes tours of the brewing operations. Philadelphia’s first micro-brewery, **Dock Street Brewing Company** is known for staples and fearless experimental beers.



SOUTHEAST ASIAN MARKET



VIETNAM RESTAURANT



PIZZERIA BEDDIA



FRIDAY SATURDAY SUNDAY

THE ART LOVERS

Philadelphia Trip

Home to the largest collection of public art in the U.S., Philadelphia also boasts plenty of historic museums and renowned performing arts companies that will impress any art aficionado.



THE BARNES FOUNDATION



PUBLIC ART TOURS

Take a **“Museum Without Walls”** audio tour on bike or by foot, courtesy of the country’s first private entity (Association of Public Art) dedicated to public art. Or, explore the world’s largest outdoor art gallery on public and private tours with **Mural Arts Philadelphia**.

INSTITUTE OF CONTEMPORARY ART

Head to West Philadelphia to visit the **Institute of Contemporary Art (ICA)** on the University of Pennsylvania’s campus, a free museum that has been at the forefront of cutting-edge exhibitions since it organized Andy Warhol’s first solo museum show in 1965.

BARNES FOUNDATION

The collector of one of the world’s most important collections of post-impressionist and early modernist art, Dr. Albert C. Barnes, arranged his impressive collection in “ensembles” for symmetry, light, color, and space.



PENN LIVE ARTS

Take in a show at **Penn Live Arts**, the University of Pennsylvania’s home for the performing arts, offering a broad range of programs in theatre, music and dance for over 50 years.

AVENUE OF THE ARTS

The arts and culture hub is home to some of the city’s most notable performing arts institutions, including the **Kimmel Center**, **Merriam Theater**, and **Philadelphia Theater Company**.

ORCHESTRA AND OPERA

Philadelphia is a premier hub for the performing arts with several esteemed companies. **Ensemble Arts Philly** is home to world-renowned organizations, including the **Philadelphia Orchestra** and **Opera Philadelphia**.



PHILADELPHIA BALLET

Attend a performance by **Philadelphia Ballet**, considered one of America's leading ballet companies, at the majestic and historic Academy of Music.

WONDERSPACES

Explore the interactive and immersive art installations at this futuristic art gallery perfect for a photo shoot.

INDEPENDENT THEATERS

Catch a new performance at Philadelphia's independent theaters, known for professional and world-premiere productions and commitment to presenting original works. Theaters include the **Arden Theater Company**, **The Drake Theater**, and the **Plays and Players Theater**.

FRINGEARTS

This 300-seat theatre on the Delaware River waterfront offers year-round genre-defying dance, theater and music performances by emerging innovators who push the boundaries of artmaking. Stay for dinner at the **Fringe Bar** and enjoy soulful pub cuisine enhanced by performances.

PENNSYLVANIA ACADEMY OF THE FINE ARTS

Explore America's oldest art museum and school that trained the likes of Thomas Eakins, Mary Cassatt, Henry O. Tanner, Meta V.W. Fuller and many more, with a vast collection of 19th- and 20th-century American paintings and sculptures housed in a grand New-Gothic building designed by Frank Furness.

CURTIS INSTITUTE OF MUSIC

Attend a student recital, the Curtis Symphony Orchestra, Curtis Opera Theatre, or family concerts at this renowned, exclusive conservatory, located in Rittenhouse Square, that trained virtuosos such as Leonard Bernstein and Samuel Barber.

MOORE COLLEGE OF ART

Free to visit, the **Galleries at Moore** introduce the work of significant regional, national and international artists to the community through distinctive exhibitions and educational programs.

ARCHITECTURE TOURS

Take a tour and learn about Philadelphia's fascinating architecture, dating back to the 17th century. The city has more historic buildings from the colonial and federal periods of American history than anywhere else in the United States.

HOTEL | THE LOGAN

With more than 1,800 original works, **The Logan** is more like an art museum that lets guests sleep over. The hotel's collection is so extensive that visitors can take a free, self-guided tour through a mobile app.



SPRING ARTS MURALS



PHILADELPHIA BALLET



WONDERSPACES



PENNSYLVANIA ACADEMY OF THE FINE ARTS

MORE PHILADELPHIA *Experiences*



FAMILY-FRIENDLY

PLEASE TOUCH MUSEUM

Keep the kids engaged (and feel like a kid again yourself) at this all-ages attraction where interacting and learning from whimsical exhibits is the name of the game.

PHILADELPHIA ZOO

The zoo is the nation's oldest and one of the world's best. The innovative Zoo360 experience allows tigers, gorillas and more to climb overhead as you move between exhibits.

THE FRANKLIN INSTITUTE

Inspired by a Philadelphia statesman, scientist and inventor Benjamin Franklin, this museum is known for its all-ages, hands-on exploration of science concepts, including a giant walk-through heart, planetarium, immersive brain exhibit and more.

ACADEMY OF NATURAL SCIENCES OF DREXEL UNIVERSITY

Explore life-size dioramas, fossils, and other exhibits that examine biodiversity and environmental science at the **Academy of Natural Sciences**, the first natural sciences institution in the Americas.

INDEPENDENCE SEAPORT MUSEUM

Adventure through America's maritime history with hands-on exhibits at this waterfront museum, then tour the **Cruiser Olympia** battleship and the WW II-era **Submarine Becuna**.

ADVENTURE AQUARIUM

Hop aboard the seasonal RiverLink Ferry to sail across the Delaware River to the aquarium, which is home to over 8,000 marine animals including the largest shark collection in the Northeast.

BATTLESHIP NEW JERSEY

A short walk from the aquarium, explore the decks, halls, and corridors of the U.S. Navy's most decorated battleship. Signal your visit with a bang by firing the ship's saluting gun.

FRANKLIN SQUARE

Franklin Square is a Philadelphia classic, brimming with playgrounds, mini golf, a carousel and a nearly two-century-old fountain that puts on a memorable show.

MUSEUM OF ILLUSIONS

Lose touch with reality at the mind-bending **Museum of Illusions**. Guests engage with more than 60 exhibits featuring holograms, optical illusions, and immersive rooms.



HOTEL | LOEWS HOTEL PHILADELPHIA

The Loews welcomes families to stay with exclusive partnerships, delicious menus, and special events that make a visit to Philadelphia special for the young and young at heart.



ACADEMY OF NATURAL SCIENCES OF DREXEL UNIVERSITY



THE FRANKLIN INSTITUTE



PHILADELPHIA'S MAGIC GARDENS



ONLY IN PHILADELPHIA

PHILADELPHIA'S MAGIC GARDENS

Bask in the reflections of Philadelphia's living mosaic. Half indoor, half outdoor, fully out of the ordinary, this mesmerizing labyrinth is the largest work to date by mosaic artist Isaiah Zagar.

PENN MUSEUM

Uncover an amazing collection of nearly a million of archaeology's most prized artifacts — including the largest Sphinx in the western hemisphere.

MÜTTER MUSEUM

Named one of the world's "can't miss museums" by Lonely Planet, the **Mütter's** unique exhibits and specimens tell the story of medicine through the lives of individuals, the conditions they faced, and the tools and therapies used to treat them.

NATIONAL LIBERTY MUSEUM

Steps from Independence Hall, this museum examines the principles of freedom and liberty via intricate glass art and a crack-less copy of the Liberty Bell.

CHERRY STREET PIER

This former municipal pier along the Delaware River is now a mixed-use space with artist studios, rotating exhibitions, pop-up events, and a riverside open-air dining area.

SIMEONE FOUNDATION AUTOMOTIVE MUSEUM

Change course toward Southwest Philadelphia and explore one of the world's greatest collections of racing sports cars. Visit on select Saturdays to see these vintage vehicles rev their engines and burn rubber in the parking lot.

ICONIC TOURS

Philadelphia has a tour for every type of interest. Follow expert guides on engaging tours around the city, including the **StrEATS of Philly Food Tours**, **Ghost Tours of Philadelphia**, and **The Black Journey Tour**.

HOTEL | GUILD HOUSE HOTEL

Housed inside the former home of the New Century Guild — one of the nation's oldest prominent women's empowerment organizations — **The Guild House** features 12 stylish suites steps from the restaurants and storefronts.

LUXURY

START AT THE SPA

Ease into the day with a spa session at one of Philadelphia's luxurious accommodations, such as **The Rittenhouse** or **Four Seasons Hotel Philadelphia** at Comcast Center.

BARNES FOUNDATION

Admire paintings by Modigliani, Van Gogh, and Renoir at this legendary museum with a private, docent-led tour of this soaring, modernist space.

TAKE FLIGHT

Book a private helicopter tour and retrace your steps from above (or plot where to go next) with a bird's eye view of all downtown attractions.

AFTERNOON TEA

Explore the quaint residential blocks and grand mansions of Rittenhouse Square, then keep the French charm flowing with le goûter service at the stylish **Sofitel Philadelphia** hotel, featuring tea sandwiches, pastries, and a glass of champagne.

SEA PHILLY

Book an intimate sunset cruise or classic picnic boat to view Philadelphia from the water as you sail along the Delaware and Schuylkill rivers while enjoying BYO drinks and snacks.

COCKTAILS IN THE CLOUDS

Journey into the sky for cocktails and small bites at **SkyHigh**, the 60th-floor lounge at **Four Seasons Hotel Philadelphia** at Comcast Center.

LIVE THE SUITE LIFE

Get immersed in Philadelphia's sports culture at a live sporting event. Book a private suite to experience the action in style while feasting on endless buffets.

THE MET

Enjoy a comedy show or concert at this restored historic opera house. Premium seating gives guests access to the upscale Grand Salle lounge.

HOTEL | RITZ-CARLTON PHILADELPHIA

Step inside a modern Pantheon at **The Ritz-Carlton Philadelphia**, where guests enjoy elevated experiences that celebrate local cuisine and include unparalleled personalized services.



SUNRISE ON THE WATERFRONT

ROMANTIC

SUNRISE ON THE WATERFRONT

For scenic views of the Delaware River, **Race Street Pier** is an intimate spot for picnics and watching the sun rise, just under the Benjamin Franklin Bridge.

SHANE CONFECTIONERY

Shane Confectionery in Old City is the nation's oldest continuously operating candy store, specializing in sweet treats made using traditional recipes and equipment.

HARP & CROWN

Enjoy a meal by candlelight and cozy nooks beneath framed antique portraits and large chandeliers. Head downstairs to discover a hidden speakeasy bar and two-lane bowling alley.

MANN CENTER

Take in a concert under the stars at the **Mann Center**, a 22-acre outdoor venue in Fairmount Park. Upgrade to VIP Club with private and early entry, dedicated in-seat wait service, private box seats with more legroom.

AMOR SCULPTURE

Snap a photo in front of **Robert Indiana's AMOR sculpture**, installed upon Pope Francis' visit to Philadelphia in 2015, located in Sister Cities Park on the Benjamin Franklin Parkway.

WHISPER SWEET NOTHINGS

Take a seat at one end of the **Smith Memorial Arch** in West Fairmount Park while your special someone sits on the opposite end. Whisper into the monument and the bench will carry your voice from one partner to the other.

THE CLAY STUDIO

Book a fun date night at the **The Clay Studio** as instructors guide you through pottery-making by candlelight with light food and champagne.

THE LOVE

Dine at **The Love**, an intimate restaurant serving enticing cuisine across a main dining and bar area, plus outdoor seating and a cozy upper-level loft. The Love's beverage program is inspired by trips to local vineyards and breweries, featuring plenty of drink options perfect for rekindling romance.



AMOR SCULPTURE



SHANE CONFECTIONERY

HOTEL | FOUR SEASONS PHILADELPHIA

Four Seasons Hotel Philadelphia at Comcast Center offers couples an unforgettable evening at the first Forbes Five-Star Hotel and Spa, complete with night swimming in a private infinity-edge pool and a couples' massage.



SPA AT FOUR SEASONS HOTEL PHILADELPHIA



THE CLAY STUDIO



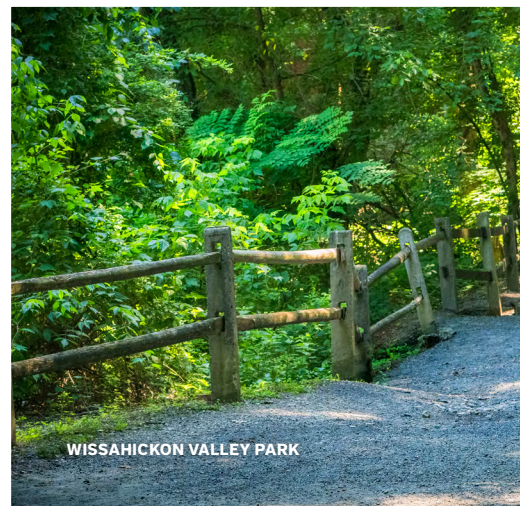
DINNER ON 13TH STREET



GIOVANNI'S ROOM



BARTRAM'S GARDEN



WISSAHICKON VALLEY PARK

SUSTAINABLE

CAFFEINATE WITH CARE

Start with a cup of coffee from **La Colombe's flagship Fishtown cafe**. The Philadelphia-founded and community-focused coffee company has a strong emphasis on environmentally-friendly practices, including direct sourcing and sustainable packaging.

INDEGO BIKE SHARE

Grab a bike from one of over 200 Indego bike share stations around the city and pedal through neighborhoods or along the **Schuylkill River Trail**, stopping for a choose-your-own adventure of open-air photo ops along the way.

WISSAHICKON VALLEY PARK

Explore over 50 miles (80 km) of rustic trails by foot or by bike in this 1,800-acre (728 hectares) creekside park. Refuel at the historic **Valley Green Inn**, whose seasonal menu can be enjoyed within the heart of the park along Wissahickon Creek.

PHILADELPHIA BY FOOT

Explore one of the most walkable downtowns in the nation on your own two feet with a self-guided adventure or by joining one of **WeVenture's** walking tours.

BARTRAM'S GARDEN

Step into the world's oldest surviving botanical garden - for free — to discover 50 acres of gardens, woodland paths, historic structures, and riverfront views.

TRIPLE BOTTOM BREWING COMPANY

Sip local suds at Pennsylvania's first certified B-Corporation brewery. **Triple Bottom Brewing Company** is powered by renewable energy and is a fair chance employer.

ENJOY A FARM-TO-TABLE FEAST

Local restaurants like **Fork** and **Talula's Garden** prioritize farm-to-table menus, sourcing responsibly from regional farms and purveyors to deliver unforgettable, only-in-Philadelphia meals.

HOTEL | VARIOUS SUSTAINABLE HOTELS

The Sofitel Philadelphia, Warwick Hotel Rittenhouse Square, Hotel Palomar, The Rittenhouse Hotel, The Ritz-Carlton, and AKA Rittenhouse have all been awarded 4 Green Keys from the Green Key Eco-Rating Program, setting a high standard for eco-conscious accommodations.



LGBTQ+

TOUR THE GAYBORHOOD

Learn more about the sites and history of Philadelphia's Gayborhood with a LGBTQ+ walking tour offered by **Beyond the Bell Tours**. Along the way, snap a photo by one of the city's LGBTQ+ murals, including Mural Arts Philadelphia's Pride and Progress by Ann Northrup.

PHILLY AIDS THRIFT @ GIOVANNI'S ROOM

Staying in the Gayborhood, visit the country's first and oldest LGBTQ+-focused bookstore and peruse the large inventory of new and used books.

LUNCH

Eat at one of Philadelphia's many LGBTQ+-owned restaurants, including **Tabu Sports Bar & Lounge** in the Gayborhood, **One Shot Cafe** in Northern Liberties, or **Mission Taqueria** and neighboring **Oyster House** along Sansom Street in Center City.

BARBARA GITTINGS GAY & LESBIAN COLLECTION

Stop into the **Free Library of Philadelphia's Independence Branch** to check out the collection of the "mother of the LGBTQ+ movement." Gittings spent most of her life in Philadelphia and edited the nation's first lesbian publication.

WILLIAM WAY LGBT COMMUNITY CENTER

Started in 1974 as the Gay and Lesbian Community Center of Philadelphia, this organization supports and advocates for the LGBTQ+ community. Stop in for literary programs, art exhibitions and to read one of 14,000+ books in their library.

SOUTH STREET ART MART

Shop t-shirts, pronoun pins, prints and accessories featuring the work of over 100 Philadelphia-area creators — including many LGBTQ+ artists — at this storefront just off of South Street.

CAKE LIFE BAKE SHOP

Grab a cupcake, cookie, or pastry from this trans-owned bakery in the heart of Fishtown. The owners are also winners of Food Network's Cupcake Wars!

DINNER ON 13TH STREET

Make dinner reservations at one of the eateries along **13th Street** operated by restaurateurs Marcie Turney and Valerie Safran. Options include modern Mexican plates, Mediterranean pizza, Spanish tapas, traditional American comfort food, and more.

TAVERN ON CAMAC

End the evening on Camac Street at this multi-level, centuries-old building featuring an intimate restaurant in the basement, a nightclub on the top floor, and a piano bar with nightly performances on the main level.

HOTEL | SOFTEL PHILADELPHIA AT RITTENHOUSE SQUARE

Each June, **Sofitel Philadelphia** proudly raises the Philadelphia version of the Gay Pride Flag and hosts Pride Drag Tea with performances every weekend.



BETSY ROSS HOUSE



ITALIAN MARKET



WHARTON ESHERICK MUSEUM



LONGWOOD GARDENS

HISTORIC

JOHNSON HOUSE HISTORIC SITE

In Philadelphia's Germantown neighborhood, the **Johnson House** was once home to a family of Quaker abolitionists and served as a vital part of the Underground Railroad. Today, the site is home to the **Underground Railroad Station and House Museum**.

WALNUT STREET THEATRE

Founded in 1809, America's oldest theatre produces an exciting season of Broadway-quality musicals and plays, along with its acclaimed 'WST for Kids' series.

BENJAMIN FRANKLIN MUSEUM

Explore the life and legacy of Philadelphia's famous Founder, Benjamin Franklin, who fulfilled various roles during his lifetime, including printer, scientist, diplomat, and founder of civic institutions.

BETSY ROSS HOUSE

This historic house commemorates the life and accomplishments of Betsy Ross, a Philadelphia patriot believed to have made the first U.S. flag.

CARPENTERS' HALL

Enter **Carpenters' Hall**, the site of America's First Continental Congress, where the nation's Founders met to discuss declaring their independence from Great Britain.

CHRIST CHURCH BURIAL GROUND

Sit in the pews where the nation's Founders once worshipped, then pay respects to Benjamin Franklin at the nearby burial grounds.

EDGAR ALLAN POE HOUSE

Peer into the study where one of America's most influential writers penned some of his well-known spine-tinglers. Don't forget to snap a photo with the accompanying mural, just across the street.

HOTEL | THE NOTARY HOTEL

The Notary Hotel, Autograph Collection, is housed in Philadelphia's historic City Hall Annex. It retains its original charm and encourages guests to make their mark on the city, embodying the theme of a notary or "stamp of approval."

THE COUNTRYSIDE OF PHILADELPHIA

LONGWOOD GARDENS

Longwood Gardens, situated on 1,077 acres (436 hectares), features lush indoor gardens, 20 outdoor gardens, the largest fountain collection in North America, and a breathtaking conservatory. Built in 1919, the conservatory is one of the world's great greenhouse structures.

VALLEY FORGE NATIONAL HISTORICAL PARK

Valley Forge National Historical Park is the site where General George Washington forged his Continental Army into a fighting force during the difficult winter encampment of 1777-78. The Park features Washington's Headquarters, Trolley Tours, a renovated visitor center, spots to fish, picnic areas, and pet friendly trails for biking, hiking, walking, and running.

BRANDYWINE MUSEUM OF ART

An art treasure known internationally for its collections of works by three generations of the **Wyeth family — N.C., Andrew and Jamie** — the museum has a fine collection of American illustration, still life and landscapes.

AMERICAN HELICOPTER MUSEUM

Guests of all ages will enjoy the **American Helicopter Museum**, where one can explore a collection of over 35 helicopters on display both indoors and out in a truly unique hands-on experience.

SMALL TOWN CHARM

Unique shopping can also be found throughout the quaint and cozy small towns and villages that populate The Countryside of Philadelphia. Popular spots include **Ambler, Ardmore, Skippack, West Chester, Lansdale, Phoenixville**, and the "Mushroom Capital of the World" — **Kennett Square**.

MARSH CREEK STATE PARK

Escape to the tranquility of **Marsh Creek State Park** in Chester County, where scenic beauty and recreational opportunities create an inviting haven for nature lovers.

WHARTON ESHERICK MUSEUM

Wharton Esherick, known as the "Dean of American craftsmen," was a sculptor who worked primarily in wood, molding furniture, interiors and buildings – creating sculptural environments. His hilltop studio/residence in Paoli became the **Wharton Esherick Museum** in 1972 featuring more than 200 of his works on exhibition.

THE JOHN JAMES AUDUBON CENTER AT MILL GROVE

The Center at Mill Grove offers an 18,000-square-foot museum and nature-based facility, as well as 175 acres of landscape and outdoor trails. Enjoy interactive and family-friendly ways to explore the famed ornithologist, galleries for art and conservation, birding exhibits, and interpretive demonstrations.

HOTEL | HILTON GARDEN INN, KENNETT SQUARE

Stay in the heart of the Brandywine Valley. **The Hilton Garden Inn, Kennett Square** is minutes away from Longwood Gardens, historic sites, and local wineries.

AS SEEN IN THE MOVIES

THE ITALIAN MARKET (ROCKY)

Retrace Rocky's famous jog through this centuries-old open-air market filled with cuisine from, despite its name, many different cultures.

THE SLY STALLONE SHOP

Find Rocky apparel, souvenirs, and other memorabilia that you will not find anywhere else in the city at the **Parkway Visitor Center** at the base of the Philadelphia Museum of Art.

VICTOR CAFE (ROCKY/CREED)

Enjoy traditional red gravy Italian dishes and an extensive wine list at this South Philadelphia restaurant that was featured in several **Rocky** and **Creed** films. Here, the servers double as professional opera singers who perform every 20 minutes.

LAUREL HILL CEMETERY (ROCKY)

This 78-acre (31 hectares) National Historic Landmark is also the nation's second oldest cemetery and served as the location for fictional character Adrian Balboa's — Rocky's wife — gravesite.

MAC'S TAVERN (IT'S ALWAYS SUNNY IN PHILADELPHIA)

Co-owned by Rob and Kaitlin McElhenney of **It's Always Sunny in Philadelphia** fame, this no-nonsense pub in Philadelphia's historic district captures the spirit of Paddy's Pub from the iconic TV show.

JOHNNY BRENDA'S (CREED)

This hip Fishtown bar and music venue was the location for a pivotal scene in the first **Creed** film. See up and coming indie-rock artists and DJ's spinning all-vinyl in the heart of one of Philadelphia's trendiest neighborhoods.

RITTENHOUSE SQUARE (TRADING PLACES)

One of Philadelphia's original historic squares, **Rittenhouse Square** served as a set for a comedy scene featuring Eddie Murphy in the hit comedy **Trading Places**.

HOTEL | THE BELLEVUE

Embodying the style and revelry of Philadelphia, **The Hyatt at the Bellevue** stands in as the exterior for Rocky Balboa's gym in **Rocky III**.





MORRIS ARBORETUM



DELAWARE RIVER WATERFRONT



THE RAIL PARK

OUTDOORS

DELAWARE RIVER WATERFRONT

Stroll along the river to discover Philadelphia's waterfront parks, including the riverside rink that activates in the spring and winter with seasonal skating and more.

CIRA GREEN

Head to the 12th floor of this otherwise unsuspecting parking garage to find a picnic-perfect park in the sky with some of the best views of the Center City skyline.

FDR PARK

Take a lap around the lake in the middle of South Philadelphia's largest park. Along the way, visit a romantic pavilion, an iconic skatepark, and the oldest **Swedish museum** in the United States.

BENJAMIN FRANKLIN BRIDGE

Chase the sunset along the **Benjamin Franklin Bridge's pedestrian walkway**. Enter at 5th & Race streets and head east to encounter one of the best views of the city as you hover over the Delaware River.

MORRIS ARBORETUM

A quick car or train ride brings you to a 92-acre (37 hectares) arboretum that is bursting with year-round greenery and plenty of kid-approved activities, including a 50-foot-high (15 meters) canopy walk.

SHOFUSO JAPANESE CULTURAL CENTER

Located in West Fairmount Park, **Shofuso** was built in Japan in 1953 using traditional techniques and materials and moved to Philadelphia. The traditional-style house with its hinoki roof — the only one of its kind outside of Japan — can be toured, along with the gardens, koi pond and island.

THE RAIL PARK

Explore this elevated park occupying former train tracks of the Reading Railroad (of Monopoly fame). Relax on an industrial swing before exploring the murals nearby.

HOTEL | AKA UNIVERSITY CITY

AKA University City shares the same block as elevated park, Cira Green, an outdoor oasis with seasonal festivities and stunning views.



SHOFUSO JAPANESE CULTURAL CENTER



OLD CITY SHOPPING



FAIRMOUNT WATER WORKS



WEITZMAN NATIONAL MUSEUM OF AMERICAN JEWISH HISTORY

FREE & BUDGET FRIENDLY

UNITED STATES MINT

Glance behind the scenes of our nation's (and the world's) largest producer of coins at this free-to-visit facility, then pick-up limited-edition coins and other souvenirs in the gift shop.

WEITZMAN NATIONAL MUSEUM OF AMERICAN JEWISH HISTORY

Explore the greatest contributions of Jewish Americans at this museum alongside Independence Hall, whose Only in America® Gallery honors Leonard Bernstein, Ruth Bader Ginsburg, Steven Spielberg, and other extraordinary Jewish Americans.

WAGNER FREE INSTITUTE OF SCIENCE

This free-to-visit museum boasts more than 100,000 natural history specimens including fossils, shells, minerals, mounted animal skeletons and skins displayed in original wood and glass cabinets.

FABRIC WORKSHOP AND MUSEUM

Stop into this free, internationally acclaimed contemporary art museum, featuring works by artists with diverse artistic backgrounds including sculpture, installation, video, painting, photography, ceramics, and architecture.

FREE EVENTS AT ENSEMBLE ARTS PHILLY

Free tours and programming showcasing local artists take place under **Ensemble Arts Philly's** soaring 150-foot (45-meter) vaulted roof in the Plaza. Programming includes Family Fundays, Lunchtime Unplugged, Happy Hour Sessions, and Nightlife.

FAIRMOUNT WATER WORKS

Explore the architectural beauty of **Fairmount Water Works**, located along the Schuylkill River, and learn about its historical significance in Philadelphia's water-supply system with its free museum.

EXPLORE PHILADELPHIA'S ORIGINAL SQUARES

Discover the historical charm of Philadelphia by exploring **Founder William Penn's original squares**, each with a unique character and significance in the city.

THE UNIVERSAL SPHERE™

From Steven Spielberg, DreamWorks Animation, Universal Destinations & Experiences, and Comcast Labs, this free, cinematic experience is presented in a dome theater in the Comcast Technology Center upper lobby.

HOTEL | MOTTO BY HILTON

Crowned by a rooftop taqueria, **El Techo**, this boutique budget-friendly micro-hotel is in the heart of Rittenhouse Square and features a fitness center and on-site restaurant.

SHOPPING

RITTENHOUSE ROW

Shop a mix of local boutiques and luxury names on the streets surrounding Rittenhouse Square. Personal shoppers at **Boyd's** and **Joan Shepp** will help complete your look.

THE GARDEN DISTRICT

Make your way to Philadelphia's Garden District, **Chestnut Hill**, to shop from the over 200 boutiques and small businesses that line the cobblestoned **Germantown Avenue**.

FASHION DISTRICT PHILADELPHIA

Return downtown and shop global brands and local names at the one-million-square-foot (92,903 square meters) **Fashion District Philadelphia**.

MAIN STREET MANAYUNK

Continue your fashionista getaway with a stroll through **Manayunk's** funky **Main Street** where the specialties are small-chic boutiques, galleries and owner-operated retail.

UNIVERSITY CITY

Home to the **University of Pennsylvania**, University City is an enclave of boutique shopping, coffee shop open mics and one-room cocktail venues.

SOUTH STREET

End your art tour with a walk along this famous street, known for its diverse mix of shops, bars, and restaurants. Grab a meal at **Tattooed Mom** and peruse the display of street art and graffiti from local and visiting artists.

MACY'S

Shop for tax-free clothes and shoes at a true American department store, which is also home to the world's largest playable instrument and a can't-miss holiday light show.

OLD CITY

Fill that extra room in your suitcase with souvenirs, gifts and tax-free clothes and shoes purchased at one of the many independent shops and art galleries in Old City.

KING OF PRUSSIA MALL

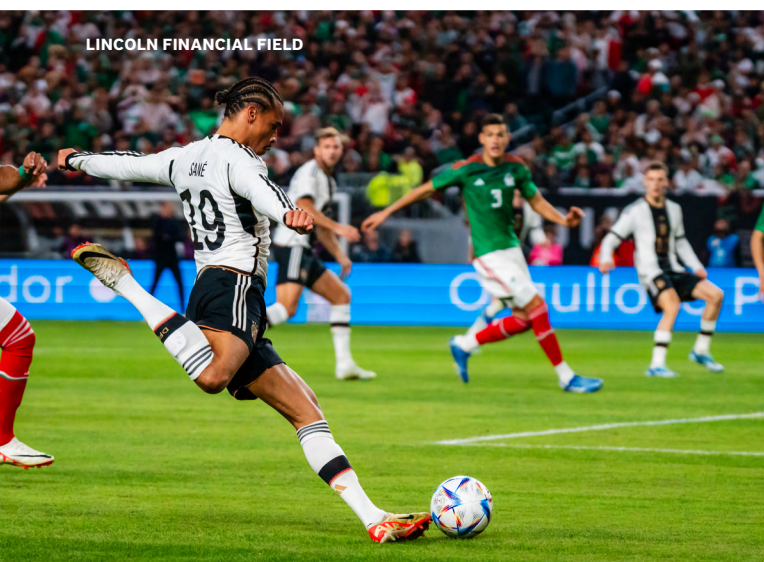
One of America's most iconic and largest shopping malls, King of Prussia attracts visitors from around the world with several department stores, a collection of luxury retailers unsurpassed in the region, and more than 450 shops and restaurants.

PHILADELPHIA PREMIUM OUTLETS

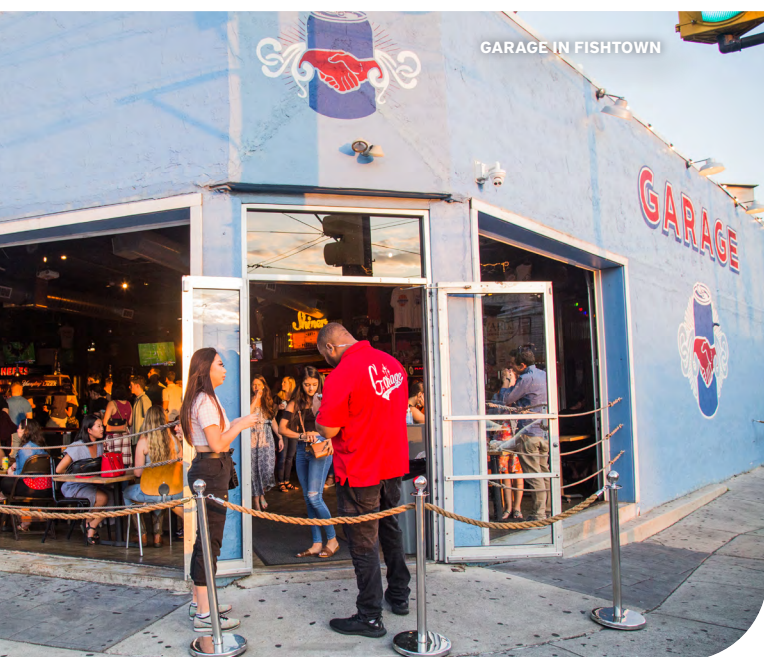
Located just 35 miles (56 km) northwest of downtown Philadelphia in Limerick, Pa., the **Philadelphia Premium Outlets** feature more than 150 designer and brand-name outlet stores in an astounding 425,000-square-foot (39,483 square meters) space. Upscale merchants like Calvin Klein, J.Crew, Coach and Brooks Brothers are among the many stores ready for browsing.



CITIZENS BANK PARK



LINCOLN FINANCIAL FIELD



GARAGE IN FISHTOWN

SPORTS

AMERICA'S PASTTIME AT CITIZENS BANK PARK

Enjoy the hometown pride during a **Philadelphia Phillies** baseball game at **Citizens Bank Park**. The stadium is great for families with The Yard, a 13,000-square-foot (1,208-square-meter) interactive kids' baseball experience.

CATCH A GAME AT THE XFINITY MOBILE ARENA

See a game at XFINITY Mobile Arena, an indoor arena home to some of Philadelphia's favorite teams such as the **Philadelphia 76ers** (basketball), **Flyers** (hockey), and **Wings** (indoor lacrosse).

FOOTBALL – AND AMERICAN FOOTBALL – AT LINCOLN FINANCIAL FIELD

Year-round, Lincoln Financial Field is home to both American football and soccer, as the venue for the **Philadelphia Eagles** and several national team and international exhibition soccer matches, and will host matches for the FIFA World Cup 2026™.

SQUASH AT ARLEN SPECTER CENTER

The **Arlen Specter Center** is the training center for U.S. Squash National Team and the home site for premier tournaments throughout the year including US Open Squash. Fans can buy tickets for these events to get in on the action.

HOLE-IN-ONE

The Philadelphia area has plenty of options for golfers and golf fans, from mini golf to golf simulators to some of the world's most pristine golf courses that host major championships. Experience elaborate mini-golf at **Puttshack** and **Libertee Grounds** in Philadelphia, or see the best in the game tee up at the historic **Aronimink Golf Club** in Newtown Square, PA, the site of the 2026 PGA Championship.

CHEER ON WITH LOCALS AT SPORTS BARS

Grab a drink at any of Philadelphia's lively sports bars to feel the passion of sports fans. Get craft beers on tap and play bar games at **Garage**'s locations in Fishtown and South Philadelphia, or try pan-fried dumplings at **Bar-ly**, Chinatown's sports bar.

HOTEL | LIVE! CASINO & HOTEL

Within walking distance to Philadelphia's sport complex, **Live! Hotel & Casino** lets visitors play their own high-stakes games with over 140 high-action table games, 2,000 slot machines, and more.



LINCOLN FINANCIAL FIELD,
Photo Courtesy Of Philadelphia Eagles



PUTTSHACK MINI GOLF,
Photo courtesy of Puttshack



NIGHTLIFE

PREMIER ACTS ON PHILADELPHIA'S MAIN STAGES

See the biggest acts and living legends take the stage at Philadelphia's major venues. **The XFINITY Mobile Arena**, **Lincoln Financial Field**, **Citizens Bank Park**, and the **Mann Center for Performing Arts** host the biggest stars in music and comedy night after night. Don't miss premier talent at other venues such as **Union Transfer**, **The Met**, and the **Fillmore Philadelphia**.

JAZZ CLUBS

An important turn of the century jazz center, Philadelphia has clubs that are must-visit experiences for any music enthusiast. Enjoy an evening of captivating live performances and smooth melodies at renowned clubs like **Time** and **Chris' Jazz Café**.

DANCE THE NIGHT AWAY

Experience Philadelphia's soul and voyage into the city's vibrant dance scene. **The Trestle Inn** presents a unique blend of disco DJs, live dancers, and craft cocktails in a throwback whiskey go-go environment.

TRY YOUR LUCK AT A CASINO

Philadelphia has two casinos that are open 24/7 and are perfect for late-night gaming. **Rivers Casino** features an impressive collection of slots and table games and a roomy sportsbook lounge for betting. **Live! Casino & Hotel** offers state-of-the-art slot machines, live-action table games, and a FanDuel Sportsbook and Lounge.

PLAY A GAME

Local bowling alleys such as **Lucky Strike** and **South Bowl** provide lively environments to showcase competitive spirit. Alternatively, take aim at **Kick Axe Throwing Philadelphia** to relish the satisfaction of hitting the bullseye. Or play a match of ping-pong at **SPIN Philadelphia**.

LOCAL EVENTS

Local festivals, markets, and events are always taking place in Philadelphia. Neighborhoods host local street festivals year-round, including **2nd Street Festival**, **Rittenhouse Row Festival**, and **Manayunk StrEAT Food Festival**.



Annual Events



MUMMERS PARADE

ANNUALLY ON JANUARY 1

Watch as charismatic Mummies march along Broad Street during this annual Philadelphia tradition. The Mummies' colorful, extravagant costumes and choreographed performances are judged during the Fancy Brigade Finale at the Pennsylvania Convention Center.



LUNAR NEW YEAR CELEBRATION

JANUARY - FEBRUARY

Celebrate the Lunar New Year with an authentic dragon parade in Philadelphia's Chinatown. Enjoy traditional food and festivities at restaurants and businesses throughout the bustling neighborhood.

BLACK HISTORY MONTH

FEBRUARY

As one of the nation's oldest and most culturally diverse cities, Philadelphia offers numerous ways to celebrate Black history and heritage, such as visiting murals, monuments, and historic sites throughout the city.



THE PHILADELPHIA FLOWER SHOW

ANNUALLY IN MARCH

The Philadelphia Flower Show is the nation's largest and the world's longest-running horticultural event. With a new theme each year, the show transforms the Pennsylvania Convention Center with mesmerizing floral displays by premier floral and landscape designers from all over the world.

PENN RELAYS

ANNUALLY IN APRIL

Watch high school, college, and Olympic athletes compete in the oldest and largest track and field competition in the U.S. The annual sporting event is held at the historic Franklin Field on the University of Pennsylvania campus.



THE SOUTH 9TH STREET ITALIAN MARKET FESTIVAL

ANNUALLY IN MAY

Enjoy delicious Italian favorites, both sweet and savory, during The South 9th Street Italian Market Festival in South Philadelphia. Listen to live music while walking through America's largest and oldest continuously operating open-air marketplace.



PRIDE MONTH

JUNE

Philadelphia's LGBTQ+ community celebrates Pride with special events all month long, including block parties, drag shows, parades, performances, and more.



PHILADELPHIA BEER WEEK

ANNUALLY IN JUNE

Sample locally made brews while taking part in beer tours, pub crawls, and other beer-related events.

ODUNDE FESTIVAL

ANNUALLY ON THE SECOND SUNDAY IN JUNE

The Odunde Festival is the country's largest African American street festival, which features 12 blocks of vendors set up along Philadelphia's South Street. There is live entertainment and arts-and-crafts, as well as African and Caribbean soul food, all in celebration of the Yoruba New Year.

PHILADELPHIA CHINESE LANTERN FESTIVAL

ANNUALLY JUNE - AUGUST

The Philadelphia Chinese Lantern Festival transforms Philadelphia's historic Franklin Square each summer into a dreamlike garden filled with massive lantern displays that celebrate the cultural traditions of China.

WAWA WELCOME AMERICA

(JUNETEENTH - INDEPENDENCE DAY)

JUNE 19 - JULY 4, 2024

Philadelphia's annual, weeks-long celebration of American independence begins with Juneteenth festivities and concludes with free concerts and spectacular fireworks on the 4th of July.

PHILADELPHIA FRINGE FESTIVAL

SEPTEMBER - OCTOBER

More than 1,000 experimental performances including theater, dance, comedy, visual arts, spoken word, and more take over Philadelphia's neighborhoods for this annual celebration of the arts.

HALLOWEEN NIGHTS AT EASTERN STATE PENITENTIARY

SEPTEMBER - NOVEMBER

More than a dozen Halloween-inspired experiences – including several haunted houses, immersive walk-through environments, live performances, and themed bars — fill the once-abandoned cell blocks of the historic Eastern State Penitentiary.

PHILADELPHIA MARATHON

ANNUALLY ON THE THIRD WEEKEND IN NOVEMBER

The Philadelphia Marathon, renowned for its scenic route and vibrant spectators, attracts runners from around the globe each year to race one of the fastest marathon courses in the country.

PHILADELPHIA THANKSGIVING DAY PARADE

ANNUALLY ON THANKSGIVING DAY

The oldest Thanksgiving Day parade in the country, this family-friendly parade kicks off the holiday season with giant floats, balloons, marching bands, dancers, and other performers from across the country. Performances take place in front of the iconic Rocky Steps and Philadelphia Museum of Art.



CHRISTMAS VILLAGE

NOVEMBER - DECEMBER

Philadelphia's Christmas Village is one of the city's most beloved annual holiday traditions. An authentic German Christmas village brings amusements, food, and drink vendors, and more than 100 independent artisans to LOVE Park and City Hall's North Apron and Courtyard.

FOR MORE ANNUAL EVENTS, GO TO [DISCOVERPHL.COM](https://discoverphl.com)



YOWIE HOTEL



PHILADELPHIA MARRIOTT DOWNTOWN



W HOTEL PHILADELPHIA

WHERE *to Stay*

AIRPORT	ROOMS
Delta Philadelphia Airport	349
DoubleTree by Hilton Philadelphia Airport	331
Embassy Suites Philadelphia Airport	263
Four Points by Sheraton Philadelphia Airport	176
Hampton Inn Philadelphia Airport	152
Philadelphia Airport Marriott Hotel	419

CONVENTION CENTER DISTRICT/CHINATOWN	ROOMS
Aloft Philadelphia Downtown Hotel	179
Best Western Plus Philadelphia Convention Center	107
Four Points by Sheraton — Philadelphia Center City	92
Home2 Suites Philadelphia Center City	248
Hampton by Hilton Convention Center	250
Hilton Garden Inn Philadelphia Center City	279
Le Meridien Philadelphia	202
Loews Philadelphia Hotel	581
Philadelphia Marriott Downtown	1408
Quality Inn	44
Residence Inn Philadelphia Center City	290
Sheraton Philadelphia Downtown	760
The Notary Hotel, Autograph Collection	499

FAIRMOUNT PARKWAY MUSEUMS DISTRICT	ROOMS
Four Seasons Hotel Philadelphia At Comcast Center	219
The Logan, Philadelphia's Hotel	391
The Windsor Suites	155

OLD CITY	ROOMS
Apple Hostels of Philadelphia	24
Hilton Philadelphia at Penn's Landing	350
Holiday Inn Express Philadelphia Penn's Landing	184
Independence Park Hotel	36
Lokal Hotel	6
Mint House at The Divine Lorraine Hotel	101
Philadelphia Marriott Old City	364
Renaissance Philadelphia Downtown Hotel	152
The Thomas Bond House Bed & Breakfast	12
Wyndham Philadelphia Historic District	364

RITTENHOUSE SQUARE	ROOMS
Club Quarters Philadelphia	275
Element Philadelphia	460
Hyatt Centric Center City Philadelphia	332
Kimpton Hotel Palomar Philadelphia	230
Motto by Hilton Philadelphia Rittenhouse Square	252

RITTENHOUSE SQUARE	ROOMS
Sofitel Philadelphia at Rittenhouse Square	306
Sonesta Hotel Philadelphia	439
The Bellevue Hotel	172
The Inn at the Union League of Philadelphia	84
The Rittenhouse	118
The Ritz-Carlton Hotel, Philadelphia	229
The Warwick Hotel Rittenhouse Square	301
The Westin Philadelphia Hotel	294
W Philadelphia	295

MANAYUNK/CHESTNUT HILL	ROOMS
Chestnut Hill Hotel	36

SOUTH PHILADELPHIA	ROOMS
Courtyard by Marriott Philadelphia South	212
Live! Casino & Hotel	208
The Deacon	8
Yowie	13

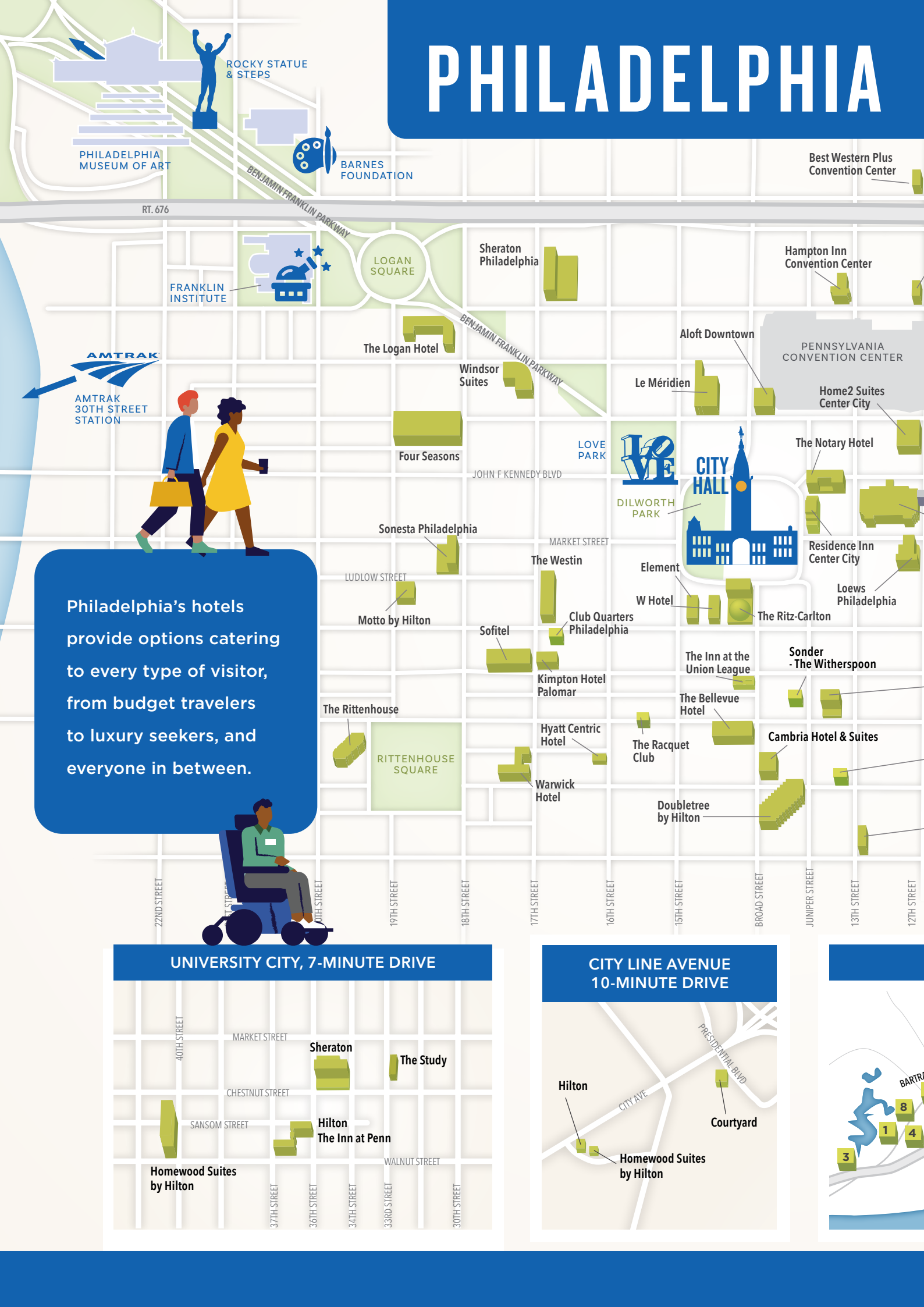
WASHINGTON SQUARE/GAYBORHOOD	ROOMS
Alexander Inn	48
Cambria Hotel & Suites Philadelphia Downtown	223
Canopy by Hilton Philadelphia Center City	236
DoubleTree by Hilton Philadelphia Center City	481
Fairfield Inn & Suites Philadelphia Downtown	119
The Franklin Residences	90
Guild House Hotel	12
Holiday Inn Express Philadelphia Midtown	168
Sonder	186
Morris House Hotel	15

WEST PHILADELPHIA	ROOMS
Homewood Suites by Hilton University City	136
Sheraton Philadelphia University City	332
The Inn at Penn, A Hilton Hotel	243
The Study at University City	212

CITY LINE	ROOMS
Courtyard Philadelphia City Avenue	333
Hilton Philadelphia City Avenue	207

NEW JERSEY/ DELAWARE COUNTY	ROOMS
DoubleTree by Hilton Cherry Hill Philadelphia	408
Hilton Garden Inn Camden Waterfront Philadelphia	180
La Quinta	105
Hawthorn Suites by Wyndham	46
The Holiday Inn and Suites at the Drexelbrook Event Center	100

PHILADELPHIA



Best Western Plus
Convention Center

Hampton Inn
Convention Center

PENNSYLVANIA
CONVENTION CENTER

Home2 Suites
Center City

The Notary Hotel

Residence Inn
Center City

Loews
Philadelphia

Sonder
- The Witherspoon

Cambria Hotel & Suites

W Hotel

The Ritz-Carlton

The Inn at the
Union League

The Bellevue
Hotel

The Racquet
Club

Doubletree
by Hilton

Element

Le Méridien

LOVE
PARK
DILWORTH
PARK

CITY
HALL

LOVE
PARK

JOHN F KENNEDY BLVD

MARKET STREET

The Westin

Sofitel

Club Quarters
Philadelphia

Kimpton Hotel
Palomar

Hyatt Centric
Hotel

Warwick
Hotel

Sonesta Philadelphia

LUDLOW STREET

Motto by Hilton

The Rittenhouse

RITTENHOUSE
SQUARE

Four Seasons

Windsor
Suites

The Logan Hotel

Sheraton
Philadelphia

LOGAN
SQUARE

FRANKLIN
INSTITUTE

ROCKY STATUE
& STEPS

BARNES
FOUNDATION

PHILADELPHIA
MUSEUM OF ART

RT. 676

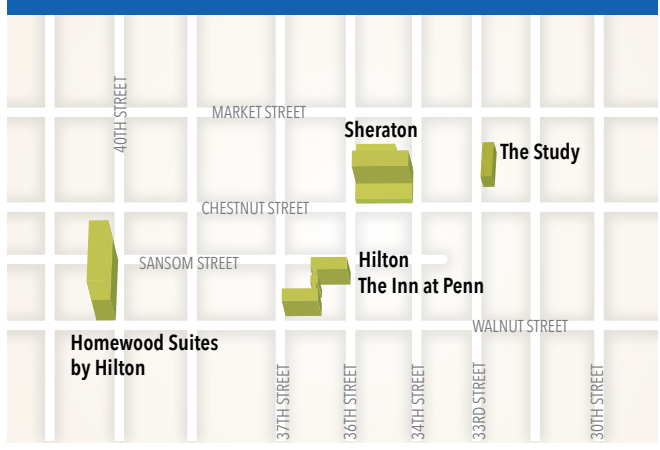
BENJAMIN FRANKLIN PARKWAY

AMTRAK

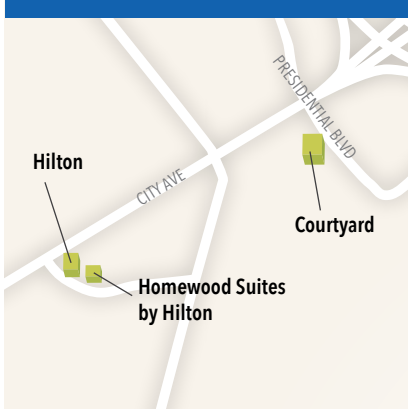
AMTRAK
30TH STREET
STATION

Philadelphia's hotels
provide options catering
to every type of visitor,
from budget travelers
to luxury seekers, and
everyone in between.

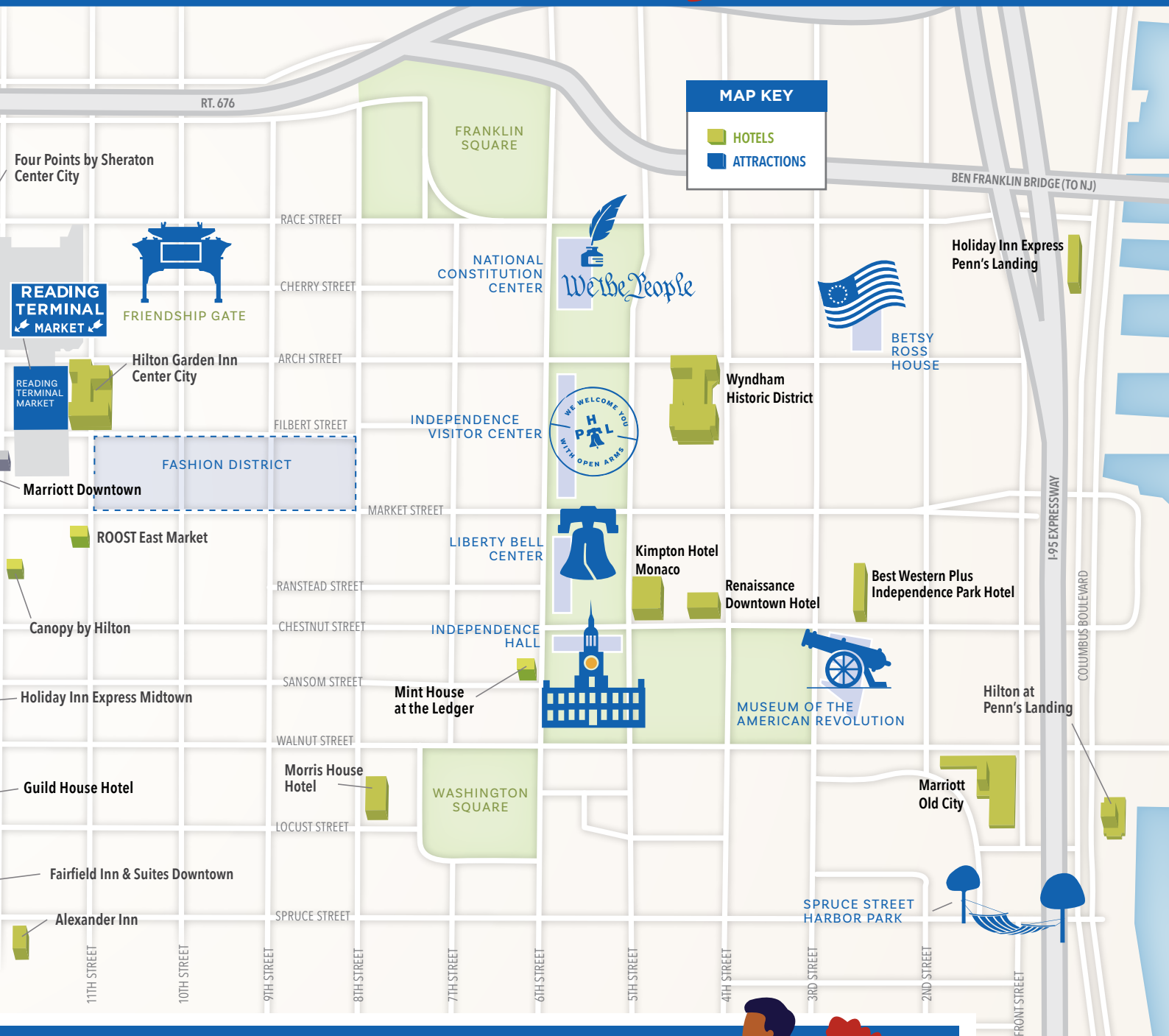
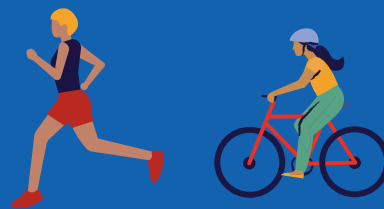
UNIVERSITY CITY, 7-MINUTE DRIVE



CITY LINE AVENUE 10-MINUTE DRIVE



HOTEL MAP



AIRPORT AND SOUTH PHILADELPHIA



1. Embassy Suites Philadelphia Airport by Hilton
2. Courtyard Philadelphia South at the Navy Yard
3. Delta Philadelphia Airport Hotel
4. DoubleTree by Hilton Philadelphia Airport
5. Four Points by Sheraton Philadelphia Airport
6. Hampton Inn Philadelphia Airport
7. Live! Casino & Hotel Philadelphia
8. Marriott Philadelphia Airport
9. Radisson Hotel Philadelphia
10. Sheraton Suites Philadelphia Airport
11. Sonesta Select Philadelphia Airport



INTERNATIONAL *Essentials*

Helpful resources for international travelers

CURRENCY EXCHANGE

Currency may be exchanged at the following locations, as well as several hotels and restaurants and the Philadelphia International Airport. Look for signs at participating establishments.

CITIZENS BANK

1515 Market Street
215-561-5800

726 Market Street
215-977-8495

PNC BANK

1600 Market Street
215-585-1166

TD BANK

1726 Walnut Street
(215) 546-1655

LANGUAGE TRANSLATION

The following language services are available for business travelers:

AML – Global American Language Services

ALSGlobal.net
800-951-5020

Deaf-Hearing Communication Centre, Inc.

dhcc.org
610-604-0450

Cetra Language Solutions

cetra.com
215-635-7090

Global Arena
globalarena.com
215-735-1055

International Simultaneous Interpreters

inter-pret.org
813-765-1971

INTERNATIONAL FLIGHT TIMES

CARIBBEAN

ARUBA	4.5 HOURS
BERMUDA	2.5 HOURS
CANCÚN	4 HOURS
GRAND CAYMAN	3.5 HOURS
MONTEGO BAY	4 HOURS
NASSAU	3 HOURS
TURKS & CAICOS	3 HOURS
PUNTA CANA	4 HOURS
ST. LUCIA	5 HOURS
ST. MAARTEN	4.5 HOURS

EUROPE

AMSTERDAM	7.5 HOURS
ATHENS	9.5 HOURS
COPENHAGEN	8.5 HOURS
DUBLIN	7 HOURS
FRANKFURT	8 HOURS
LISBON	7 HOURS
LONDON	7 HOURS
MADRID	7.5 HOURS
NAPLES	9 HOURS
NICE	8 HOURS
PARIS	7.5 HOURS
ROME	8.5 HOURS
VENICE	8.5 HOURS
ZURICH	8 HOURS

CANADA

HALIFAX	2 HOURS 10 MINUTES
MONTREAL	1 HOUR 35 MINUTES
QUEBEC CITY	2 HOURS
TORONTO	1 HOUR 40 MINUTES

MIDDLE EAST

DOHA	12.5 HOURS
------	------------

COMMON PAYMENT METHODS AND DIGITAL PAYMENTS:

APPLE PAY, GOOGLE PAY, VISA, MASTERCARD,
DISCOVER, AMERICAN EXPRESS, UNIONPAY.
SOME ESTABLISHMENTS ONLY ACCEPT CASH.

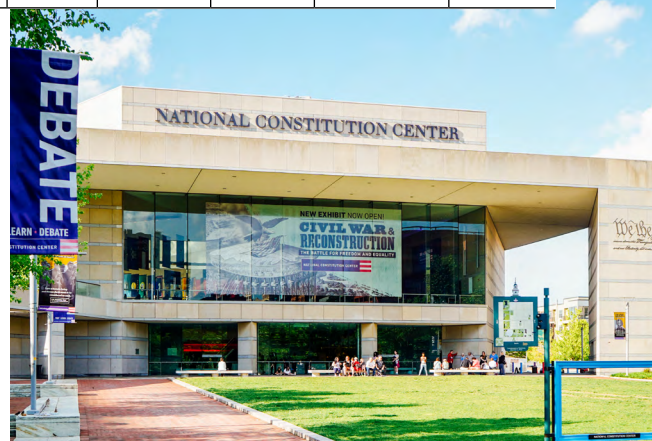
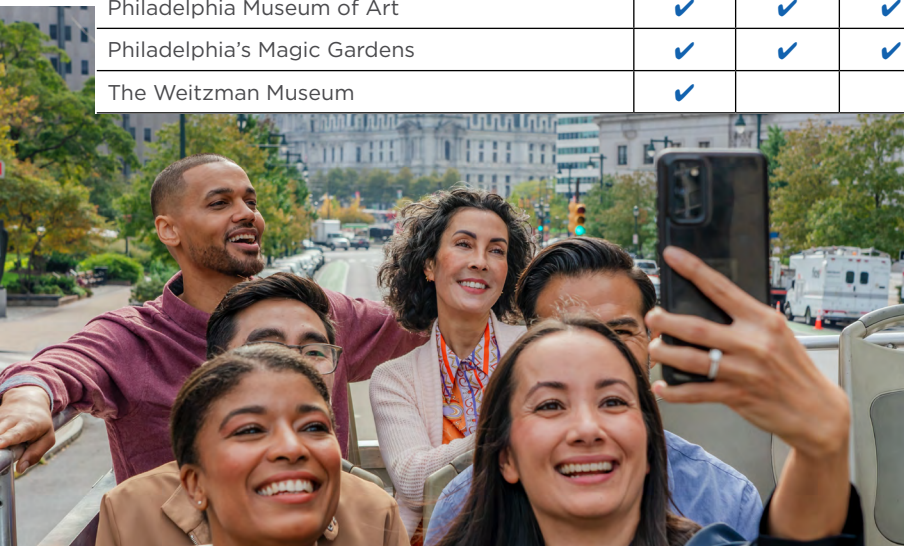


FOREIGN LANGUAGE TOURS & Experiences

In-language experiences at attractions vary, but include videos, printed materials, audio guides, digital guides, and in-person guides. Contact attractions individually for more details.

TOUR COMPANIES	Chinese	French	German	Italian	Japanese	Korean	Portuguese	Spanish
Beyond the Bell Tours				✓				
Big Bus Hop On/Hop Off Tour	✓	✓	✓	✓				✓
Centipede Tours		✓	✓					✓
Histoire(s) de Voir		✓						
Metropolis Passenger Logistics	✓	✓	✓	✓	✓			✓
Mural Arts Philadelphia		✓						
Philadelphia Sightseeing Hop On / Hop Off Tour	✓	✓			✓	✓	✓	✓
Specialty Tours		✓	✓					
StrEATS of Philly Food Tours				✓				
WeVenture Philadelphia								✓

ATTRACTIONS	Chinese	French	German	Italian	Japanese	Korean	Portuguese	Spanish
Academy of Natural Sciences								✓
American Vegan Center		✓						
The Barnes Foundation	✓	✓	✓	✓	✓	✓		✓
Betsy Ross House		✓	✓		✓		✓	✓
Comcast Center Universal Sphere	✓							✓
Eastern State Penitentiary	✓	✓	✓	✓	✓		✓	✓
The Franklin Institute								✓
Independence Hall Tour	✓	✓	✓	✓	✓	✓	✓	✓
Independence Visitor Center Corporation	✓	✓	✓	✓	✓		✓	✓
Liberty Bell Pavilion	✓	✓	✓	✓	✓	✓	✓	✓
The Masonic Library and Museum of Pennsylvania	✓	✓	✓	✓				✓
McGillin's Olde Ale House	✓	✓			✓			
Museum of the American Revolution	✓	✓	✓		✓			✓
Mütter Museum	✓		✓					✓
Penn Museum	✓							✓
Philadelphia Museum of Art	✓	✓	✓		✓	✓		✓
Philadelphia's Magic Gardens	✓	✓	✓					✓
The Weitzman Museum	✓					✓		✓



PHILADELPHIA, PENNSYLVANIA, USA

VISIT [DISCOVERPHL.COM/INTERNATIONAL](https://discoverphl.com/international)

To Find Things To Do, Places To Stay And Other Trip-Planning Essentials.

